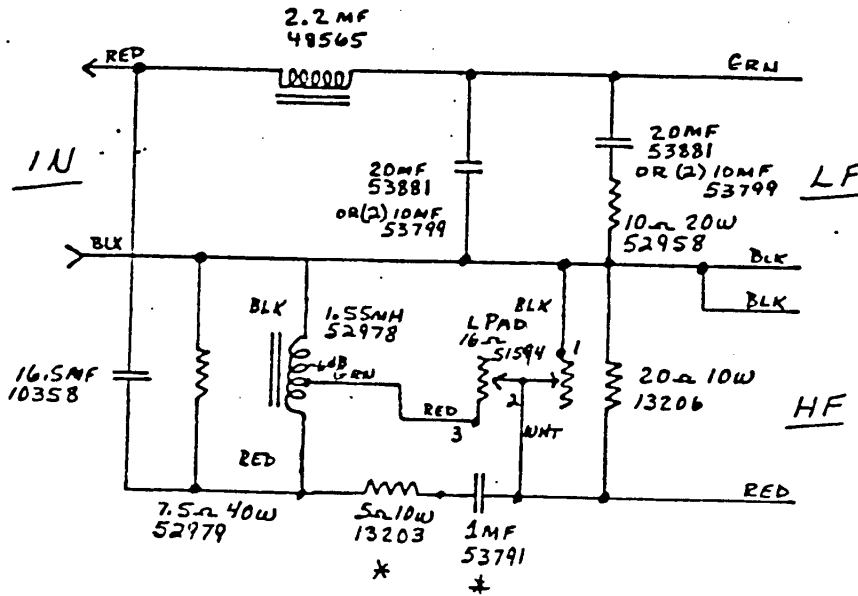


SPECIFICATIONS: NOTE ①

LOAD Z	LOW PASS	CROSS OVER	HIGH PASS	ATTENUATION
8	700HZ	1KHZ	5KHZ	5KHZ
	LF -6	LF -10		
	HF -15	HF -10	HF -6	VAR

CIRCUIT:



NOTES:

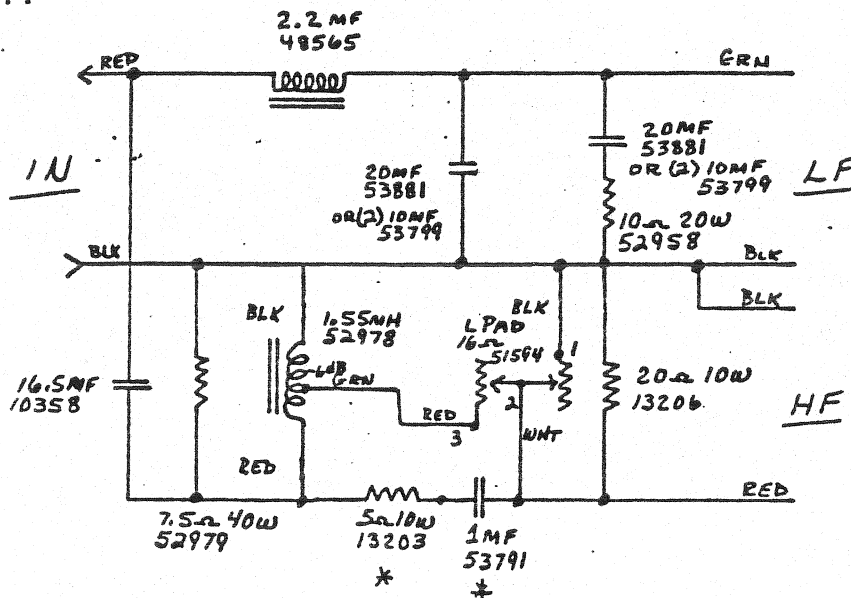
- ① USE STANDARD TEST FIXTURE
- ② HF SECTION - PARTS MARKED (\*) MAY HAVE POSITIONS REVERSED IN SOME UNITS, EITHER POSITION "OK"

K	3-76
F	8-74

SPECIFICATIONS: NOTE ①

LOAD Z	LOW PASS	CROSS OVER	HIGH PASS	ATTENUATION
8	700HZ	1KHZ	5KHZ	5KHZ
	LF -6	LF -10	HF -6	VAR
	HF -15	HF -10		

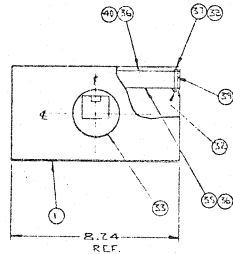
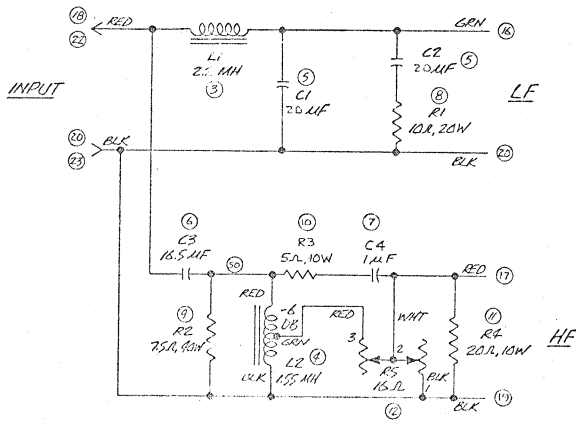
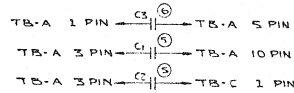
CIRCUIT:



NOTES:

- ① USE STANDARD TEST FIXTURE
- ② HF SECTION - PARTS MARKED (\*) MAY HAVE POSITIONS REVERSED IN SOME UNITS, EITHER POSITION "OK"

UNLESS OTHERWISE SPECIFIED, ALL DIMENSIONS ARE THE PROPERTY OF JERRY B. LANTIER ENGINEERING. THERE ARE NO TOLERANCE BANDS SPECIFIED UNLESS OTHERWISE NOTED. THIS DRAWING IS TO BE USED AS A GUIDE FOR MANUFACTURE OR AS A REFERENCE WITHOUT LIABILITY.



1 INSTALL ON ITEM 21, BEFORE PLACING ITEM 21 THRU ITEM 40

2 JUMPER

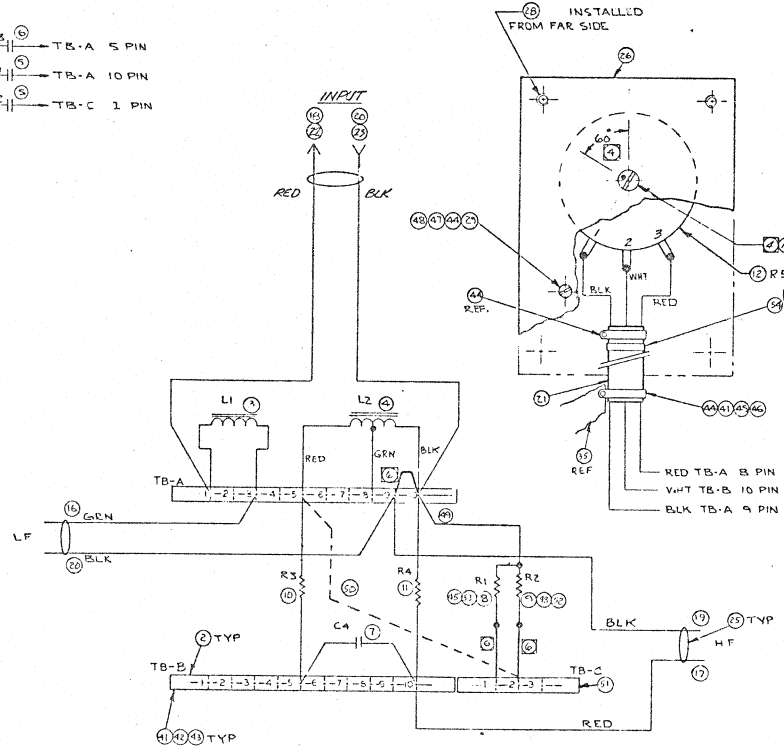
3 KNOB TO BE INSTALLED AS SHOWN WHEN SHAFT OF ITEM 12 IS ROTATED TO FULL "ON" POSITION. TOP OF KNOB TO PROTRUDE 25/32" ABOVE PCB SURFACE.

4 INDICATED ITEMS TO BE WAXED IN 1770S. BMS

5 INDICATED ITEMS BONDED TO ITEM 1 WITH 5018PS ADHESIVE

6 SEE 52994 REF FOR TEST SPECS.

NOTE:



ITEM	PART NO	DESCRIPTION	QTY
1	51031	NETWORK GAN	1
2	11291	TERMINAL STRIP 10 T	2
3	48585	INDUCTOR 2.2 MH	L1 1
4	32718	" 1.55 MH	L2 1
5	53551	CAPACITOR 2.0UF	C1 1
6	10358	" 16.5UF	C2 1
7	53741	" 10UF MRD53803	C4 1
8	52958	RESISTOR 10 JL 25W MRD 52958	R1 1
9	32979	" 25 JL 40W " 52979	R2 1
10	12503	" 50 JL 40W " 52491	R3 1
11	12205	" 20 JL 10W " "	R4 1
12	51594	" 16 JL 30W L-PAD	R5 1
13	52192	KNOB MRD 52191	1
14			
15			
16	10911	WIRE GRN 24" MRD 37051	1
17	39767	" RED 4.0" MRD 37050	1
18	10980	" RED 8.4" "	1
19	37661	" BLK 3.6" " 37055	1
20	10917	" BLK 8.4" "	2
21	53859	CABLE 3-WIRE 42" MRD 53862	1
22	53872	TERMINAL MALE	1
23	50257	TERMINAL FEMALE	1
24	21072	SCREW FLTD #8 3/8 X 3/4"	8
25	35353	CABLE TIE	3
26	56757	MOUNTING BOARD MRD 50291	1
27	52307	SCREW PHNS 8-32 X 1/4"	4
28	51204	THREADED RIVET 8-32	4
29	11638	RAIL WASHBR #6	1
30			
31			
32	12893	SPEED NUT	4
33	53017	FOULGRIL MRD 35424	1
34			
35	52890	COVER	1
36	53817	BUSHING	6
37	33436	SCREW #6-32 X 1/4" BLK OX	4
38	53867	WASHER #6 BLK OX	4
39	53810	STAND OFF	4
40	53809	PERFORATED COVER MRD 53814	1
41	10044	SCREW 4-40 X 3/8"	7
42	11509	LOCK WASHBR #4 INT	6
43	11496	NUT, HEX 4-40	6
44	53860	CABLE CLAMP	2
45	48514	KEPS NUT #4-40	3
46	12302	WASHER #4	1
47	53553	SCREW #6-32 X 5/16" FLAT HD	1
48	64508	KEPS NUT #6-32	3
49	11272	JUMPER 57L	1
50	37611	WIRE BLK 9" MRD 37055	1
51	52131	TERMINAL STRIP 3 T	1
52	20761	SCREW 6-32 X 3/4 RD HD	2
53	10043	SCREW 4-40 X 1/2 RD HD	2
54	53813	BUSHING	1

REV	DATE	BY	CHKD	APP'D	DESCRIPTION
1	11/28/57	JBL	JBL	JBL	ISSUED FOR PRODUCTION
2	12/10/57	JBL	JBL	JBL	REVISED FOR PRODUCTION
3	12/10/57	JBL	JBL	JBL	REVISED FOR PRODUCTION
4	12/10/57	JBL	JBL	JBL	REVISED FOR PRODUCTION
5	12/10/57	JBL	JBL	JBL	REVISED FOR PRODUCTION
6	12/10/57	JBL	JBL	JBL	REVISED FOR PRODUCTION
7	12/10/57	JBL	JBL	JBL	REVISED FOR PRODUCTION
8	12/10/57	JBL	JBL	JBL	REVISED FOR PRODUCTION
9	12/10/57	JBL	JBL	JBL	REVISED FOR PRODUCTION
10	12/10/57	JBL	JBL	JBL	REVISED FOR PRODUCTION

MRD 52994 R13 MRD 37055

52993